

# RAPTOR 2010 Wheeling Machine

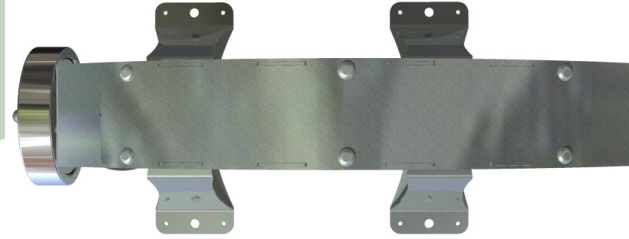
A robust frame manufactured in a traditional style.

Featuring a **working throat of 520mm, (over 20")**

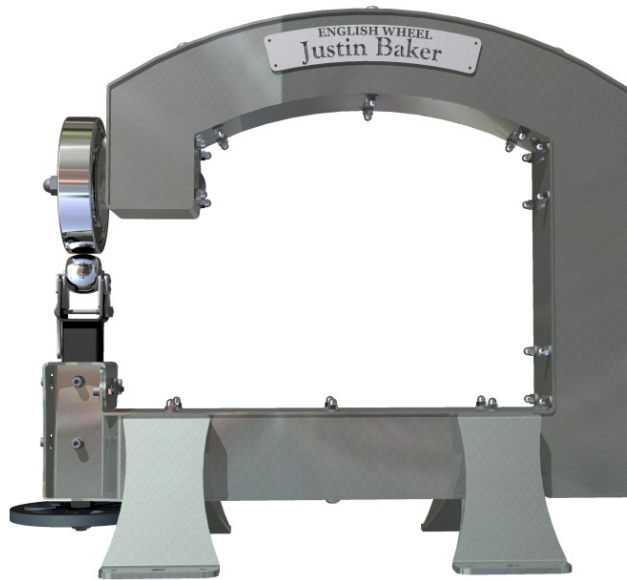
150 diameter top anvil, supplied with set of 3 lower anvils in machine steel, with contacts, blows as expected.

English Wheel

Top View



Front View



Side View



Rear View



RAPTOR 2010

The third generation, of the Raptor wheeling machine. Unique ergonomic construction, all precision laser cut profiles, and bolted construction. Producing excellent products, such as petrol tanks mudguards, fenders and headlamp light bowls. Even sculptures and jewellery!

Over center, lower cradle for fast anvil changes.

