

# FREETOR - 1000 Wheeling Machine

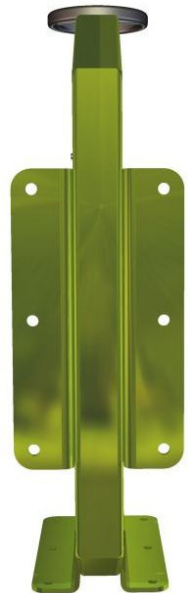
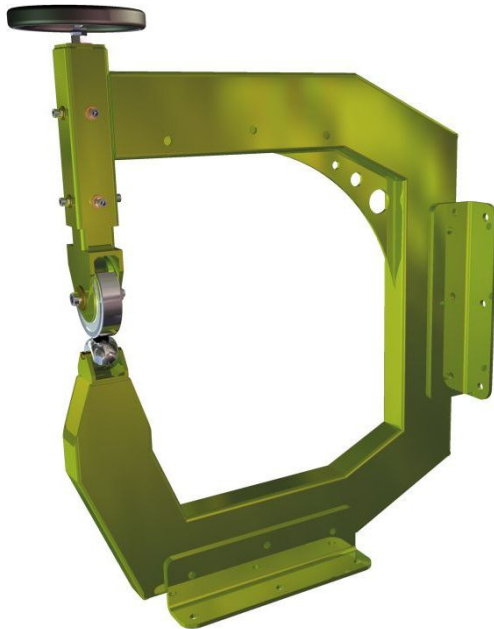
English Wheel

A robust SELF BUILT frame manufactured out of 100 x 50 x 4thk RHS Steel. Featuring a working throat of 17.5"

100 diameter top anvil, with set of 3 lower anvils in stainless steel.

View - A

Top View



Front View

Side View

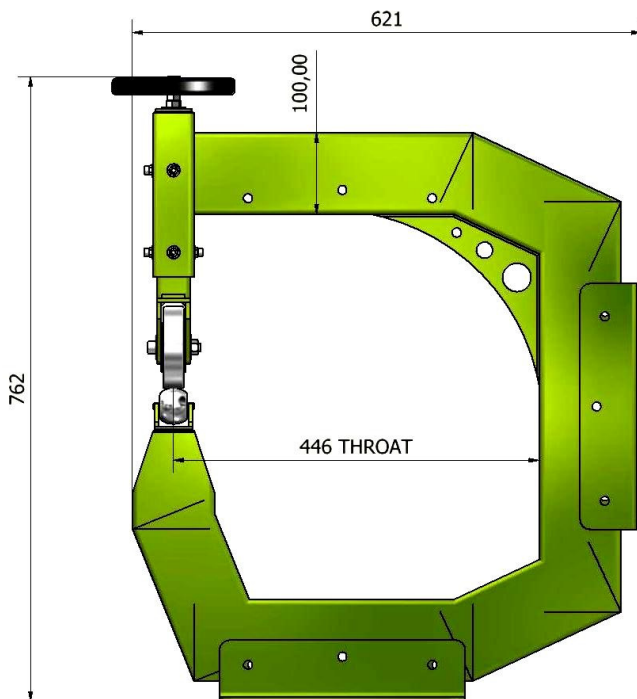
Rear View



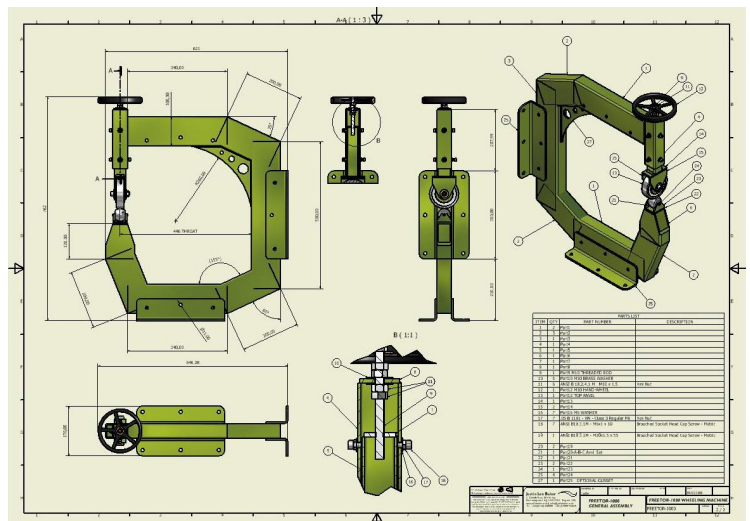
Bottom View

## Building your own machine?

Justin Baker supplies anvil sets in order for you to complete your machine. Even better is when purchasing your anvil sets, you can be supplied **free of charge**, engineering drawings and 3D models of the FREETOR-1000 wheeling machine, with optional wall mount plates. **FREE THINKING!**



FREETOR 1000 - General Dimensions



Justin Lee Baker – English Wheeling Machines | 21 Deeble Road  
Kettering | Northamptonshire | NN15 7AA | Great Britain.  
Tel: +44 (0)1536 500990 | Mobile: +44 (0) 7909 742819  
e-mail: [justin@justinbaker.co.uk](mailto:justin@justinbaker.co.uk) | [www.justinbaker.co.uk](http://www.justinbaker.co.uk)